



Viteg
iBSMon

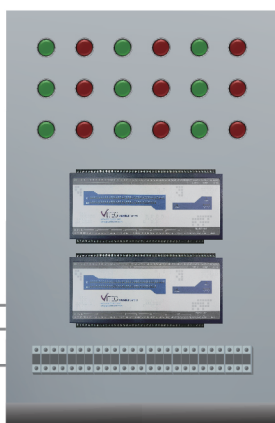
Introduction

iBSMon is a comprehensive building services monitoring system designed to enhance efficiency and innovation within building management. With its **WEB and APP** functionality, users can effortlessly monitor the operation behavior of their building services system from anywhere, at any time. iBSMon provides valuable data that helps users optimize resource usage and identify areas for improvement, ultimately driving operational effectiveness.

By fitting with building performance logic, the powerful statistically operation data history analyzation iBSMon let users making prompt decisions and tailoring their operation control schedule and maintenance services to ensure optimal equipment operation behavior. With iBSMon, building management becomes streamlined and effective, enabling users to drive innovation and meet maintenance service needs effectless.



Signal Points Interfacing



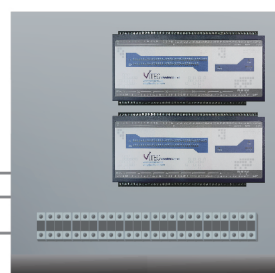
Signal Lamp Monitoring Panel

BS Monitoring or Surveillance Panel
Commonly installed in
Caretaker Rm / BMO



Interfacing Panel

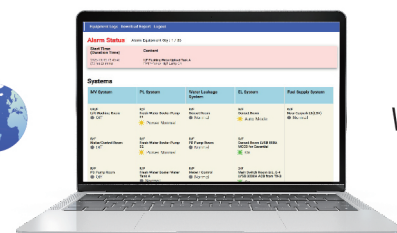
Compact
Free option installed locations
with wifi or LAN wiring



app



web/app



web

Download



Detail
Operation
Report

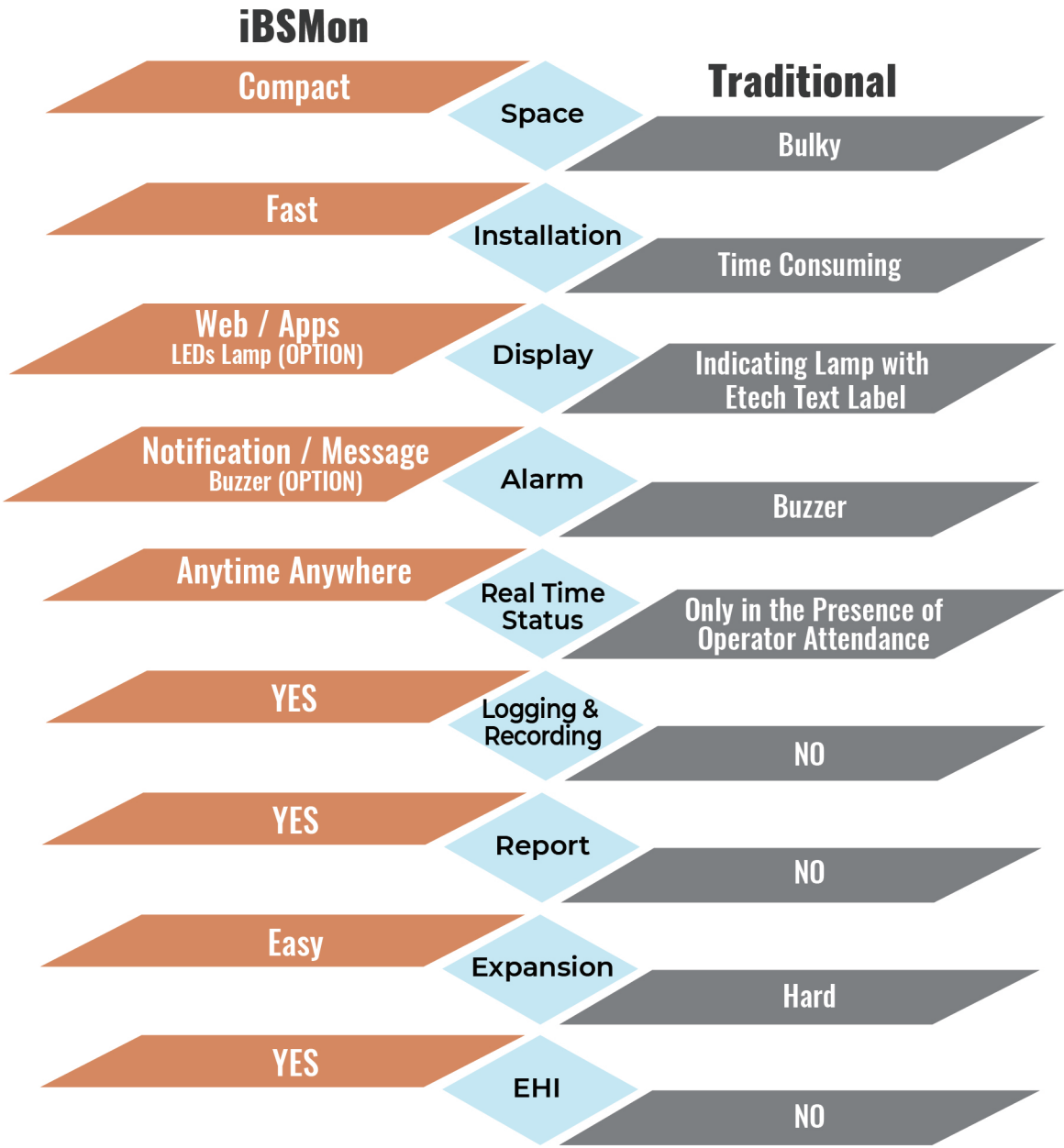
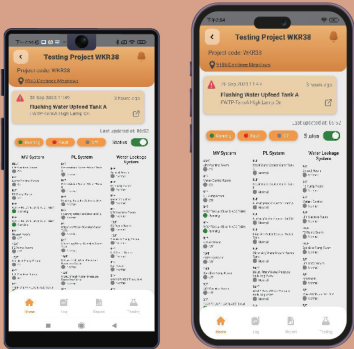
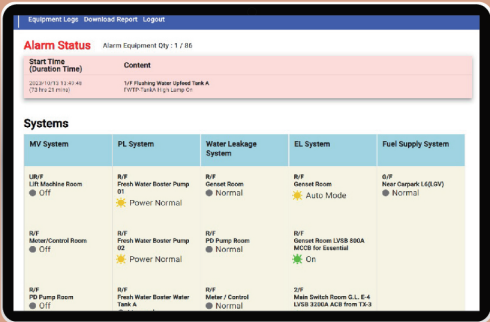
RealTime
Operation
Signal

History
logging

Instant Alarm
Notification

iBSMon VS Traditional BS Monitoring Panel

iBSMon takes up less space and is flexible for installation, allowing for optimal use of building space. iBSMon includes a **LOGGING and RECORDING** function, allowing users to track equipment performance data over time. iBSMon boasts a reporting function, providing users with analysing of the building performance. To make prompt maintenance and repair decisions. iBSMon is easy for expansion, adapting to the changing needs of a building all the time. iBSMon offers a streamlined, highly customizable building management solution that is not offered by traditional monitoring panels.



Data Privacy and Security

Secure DNS & HTTPS:

- iBSMon ensures a reliable online presence through a secure DNS domain.
- All user interactions are encrypted with HTTPS, adding an extra layer of security.

User Authentication:

- Mandatory login with industry-standard encryption ensures only authorized access to sensitive data.

Privacy Commitment:

- iBSMon prioritizes user privacy and data integrity.
- Our commitment is to maintain a safe environment for confident data access and management.

iBSMon Controller



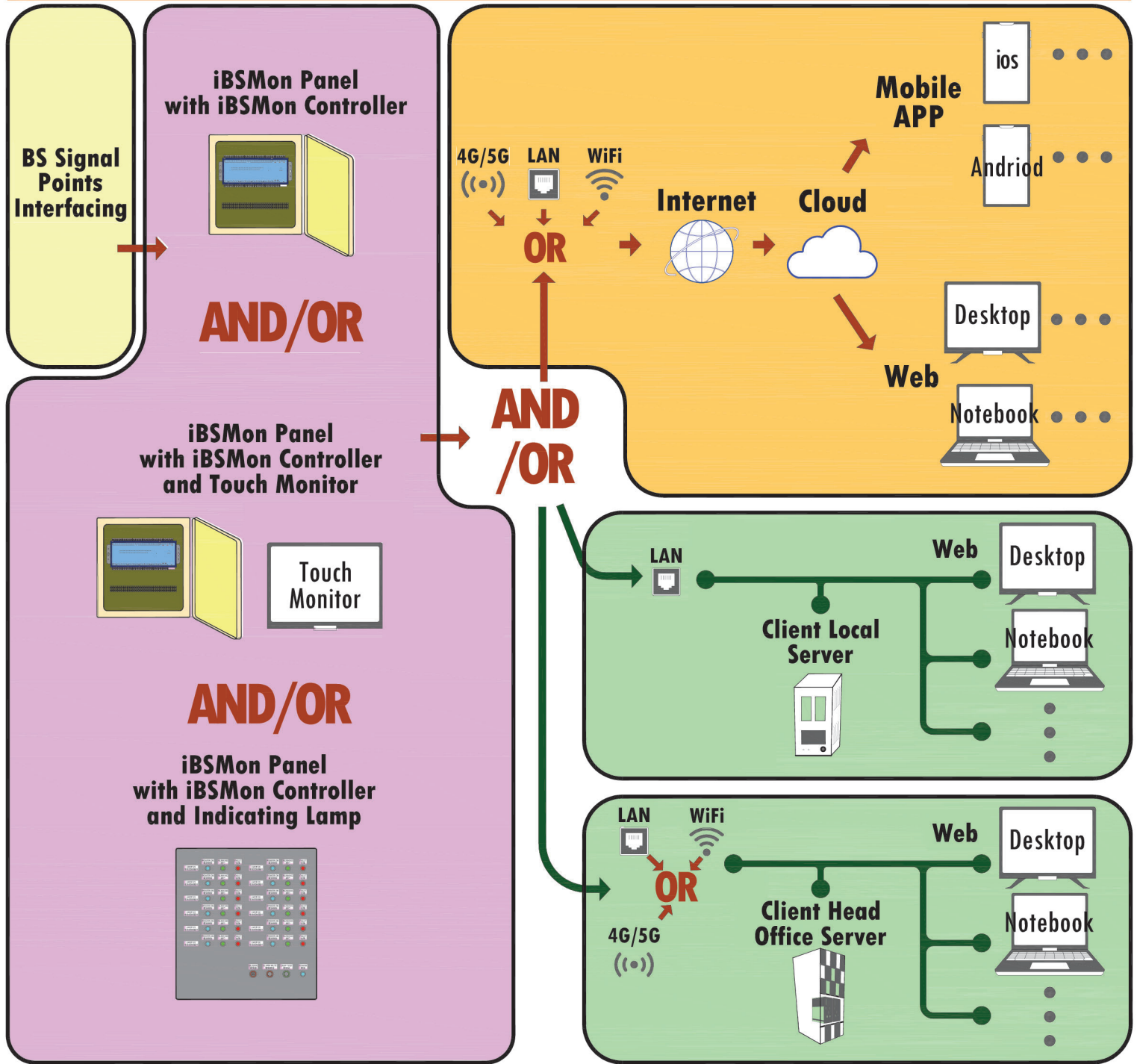
PLC :

Supply Voltage	24V DC	Electrically-Erasable Programmable Read-Only Memory	4 KB
Digital Input <ul style="list-style-type: none">● Isolate Contact Input	36 inputs	Operating Temperature Range	5 - 70°C
Digital Output <ul style="list-style-type: none">● Dry Contact	32 outputs	Operating Humidity Range	30 - 95%
Analog Input	4 – 20 mA x 3 0 – 10 V x 3	Dimensions	Width: 290 mm Height: 120 mm Depth: 30 mm
Analog Output	0 – 10V x 2	Mounting	DIN rail Mounting/Panel Mounting
Universal Asynchronous Receiver/Transmitter <ul style="list-style-type: none">● Support Modbus-RTU	RS-485 x 2		
Random-Access Memory	8 KB		

Head Office Address

13V1, Block 1, Kwun Tong Industrial Centre,
472-484 Kwun Tong Road, Kwun Tong, Kowloon, Hong Kong

Product Configuration



Total Input Point Pts

Panel	iBSMon controller Panel only					<input type="checkbox"/>	
	iBSMon controller Panel with Touch Monitor					<input type="checkbox"/>	
	iBSMon controller Panel with Indication Lamp facing					<input type="checkbox"/>	
	iBSMon controller Panel with Both Touch Monitor and Indication Lamp facing					<input type="checkbox"/>	
Data Analysis and Storage	<div>Cloud<input type="checkbox"/></div>	Network connection to user device	LAN	<input type="checkbox"/>	Mobile App	Free Trial (18 Months)	<input checked="" type="checkbox"/>
			WiFi	<input type="checkbox"/>		Standard	<input type="checkbox"/>
			5G Network Card	<input type="checkbox"/>		Comprehensive	<input type="checkbox"/>
			4G Network Card	<input type="checkbox"/>	Web	Included	<input checked="" type="checkbox"/>
	<div>Client Local Server<input type="checkbox"/></div>	Network connection to user device	LAN	<input type="checkbox"/>	Web	Included	<input checked="" type="checkbox"/>
	<div>Client Head Office Server<input type="checkbox"/></div>	Network connection to user device	LAN	<input type="checkbox"/>	Web	Included	<input checked="" type="checkbox"/>
			WiFi	<input type="checkbox"/>			
			5G Network Card	<input type="checkbox"/>			
4G Network Card			<input type="checkbox"/>				



NOWD Testing Services Co., Ltd.
TEL: +86-755-2783 0065 FAX: +86-755-2783 0095
ADD: 5A, Building 29B, Yintian Industrial Zone, Yintian Community,
Xixiang Street, Bao'an District, Shenzhen, China
Email: nowd@nowd.com.cn
Web: http://www.nowd.com.cn

Verification of Compliance

Reference No. : NTS2403263
Report No. : NTS2403263E
Applicant : VITEG Company Limited
Flat V1, 13/F., BLK.1 Kwun Tong Ind. Ctr., 472-484 Kwun Tong Road,
K.T., KLN, Hong Kong
Manufacture : VITEG Company Limited
Flat V1, 13/F., BLK.1 Kwun Tong Ind. Ctr., 472-484 Kwun Tong Road,
K.T., KLN, Hong Kong
Product : iBSMon Controller
Model No. : 36DI&32DO
Trade Mark : VITEG

The submitted sample of the above equipment has been tested for CE marking according to the following European Directives:

EMC Directive: 2014/30/EU

Standard(s) used for showing compliance with the essential requirements in the specified directive(s):

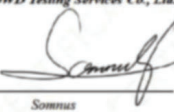
Test Standards EN IEC 61000-6-1: 2019
EN IEC 61000-6-3: 2021
EN IEC 61000-3-2: 2019+ A1: 2021
EN 61000-3-3: 2013+ A1: 2019+ A2: 2021

The statement is based on a single evaluation of one sample of above mentioned products. It does not imply an assessment of the whole production.

The manufacture should ensure that all products in series production are in conformity with the product sample detailed in this report. The applicant should hold the whole technical report at disposal of the competent all the right.

Signed for and on behalf of
NOWD Testing Services Co., Ltd.




Somnus
Technical Manager
Date: April 01, 2024



VERIFICATION OF CONFORMITY

EU - Electromagnetic Compatibility (EMC) -
No.: CTB240328006E-ZS

Applicant : VITEG Company Limited
Address : Flat V1, 13/F., BLK.1 Kwun Tong Ind. Ctr., 472-484 Kwun Tong Road, K.T.,
KLN, Hong Kong
Manufacturer : VITEG Company Limited
Address : Flat V1, 13/F., BLK.1 Kwun Tong Ind. Ctr., 472-484 Kwun Tong Road, K.T.,
KLN, Hong Kong
Product : iBSMon Controller
Trade Mark : iBSMon
Model(s) : 36DI&32DO
Test Report No. : CTB240328006E
Test Standards : EN IEC 61000-6-2:2019, EN IEC 61000-6-4:2019

The tests that base on the above designated product Complies with the essential requirements of Directive 2014/30/EU relating to Electrical Equipment designed for use within Electromagnetic Compatibility.

The test results apply only to the particular sample tested and the applicative tests carries out.

The CE marking as shown below can be affixed on product after manufacturer carries out all stipulation activities integrally of above-mentioned Regulation (Directive) and preparation of necessary technical documentation as well as the conformity declaration.

This statement is based on a single evaluation of sample of above-mentioned product. It does not imply an assessment of the whole production process.

Other relevant Regulation (Directive) requirement have to be observed.



VERIFICATION OF CONFORMITY



Shenzhen CTB Testing Technology Co., Ltd
Add: 1A2/F., Building A, No.26, Xixiang Road, Xixiang, Xixiang Street, Bao'an District, Shenzhen, Guangdong,
China.
Web: www.ctb-lab.net Tel: 4008-707-283 Email: ctb@ctb-lab.net



NOWD Testing Services Co., Ltd.

TEL: +86-755-2783 0065 FAX: +86-755-2783 0095

ADD: 5A, Building 29B, Yintian Industrial Zone, Yantian Community,
Xixiang Street, Bao'an District, Shenzhen, China

Email: nowd@nowd.com.cn

Web: <http://www.nowd.com.cn>

Verification of Compliance

Reference No. : NTS2404255

Report No. : NTS2404255R

Applicant : VITEG Company Limited

Flat V1, 13/F., BLK.1 Kwun Tong Ind. Ctr., 472-484 Kwun Tong Road, K.T.,
KLN, Hong Kong

Manufacturer : VITEG Company Limited

Flat V1, 13/F., BLK.1 Kwun Tong Ind. Ctr., 472-484 Kwun Tong Road, K.T.,
KLN, Hong Kong

Product : iBSMon Controller

Model No. : 36DI&32DO

Trade Mark : VITEG

The submitted sample of the above equipment has been tested for CE marking according to the following European Directives:

RoHS Directive: 2011/65/EU & 2015/863/EU

Standard(s) used for showing compliance with the essential requirements in the specified directive(s):

Test Standards	IEC 62321-1: 2013;	IEC 62321-6: 2015;
	IEC 62321-3-1: 2013;	IEC 62321-7-1: 2015;
	IEC 62321-4: 2013+A1: 2017;	IEC 62321-7-2: 2017;
	IEC 62321-5: 2013;	IEC 62321-8: 2017

The statement is based on a single evaluation of one sample of above mentioned products. It does not imply an assessment of the whole production.

The manufacturer should ensure that all products in series production are in conformity with the product sample detailed in this report. The applicant should hold the whole technical report at disposal of the competent all the right.

RoHS



Signed for and on behalf of
NOWD Testing Services Co., Ltd.

Somnuz

Technical Manager

Date: May 09, 2024